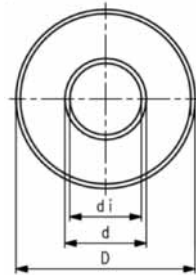


GF Piping Systems Datasheet

valid from
9/7/10

Pipes

Pipe pre-insulated ABS metric



Model:

- insulated length: 5m
- Outer jacket impact resistant. Color: black
- Insulation made from PUR

d [mm]	D [mm]	PN	Code	kg/m	di [mm]	closest inch	Refrigeration Size [inch]
25	90	10	169 017 682	1.300	20.4	¾	7/8
32	90	10	169 017 683	1.500	28.2	1	1 1/8
40	110	10	169 017 684	1.900	35.2	1 ¼	1 3/8
50	110	10	169 017 685	2.100	44.0	1 ½	1 5/8
63	125	10	169 017 686	2.700	55.4	2	2 1/8
75	140	10	169 017 687	3.500	66.0	2 ½	2 5/8
90	160	10	169 017 688	4.400	79.2	3	3 1/8
110	180	10	169 017 689	5.500	96.8	4	4 1/8
140	225	10	169 017 691	8.500	123.8	5	
160	250	10	169 017 692	10.500	140.2	6	6
200	280	10	169 017 693	13.500	175.4	8	
225	315	10	169 017 694	18.500	197.2	8	

The technical data are not binding and not expressly warranted characteristics of the goods. They are subject to change. Our General Conditions of Sale apply.

Georg Fischer Piping Systems Ltd, Postfach, CH-8201 Schaffhausen/Switzerland
 Phone +41 -(0)52-631 1111
 e-mail: info.ps@georgfischer.com
 Internet: <http://www.piping.georgfischer.com>